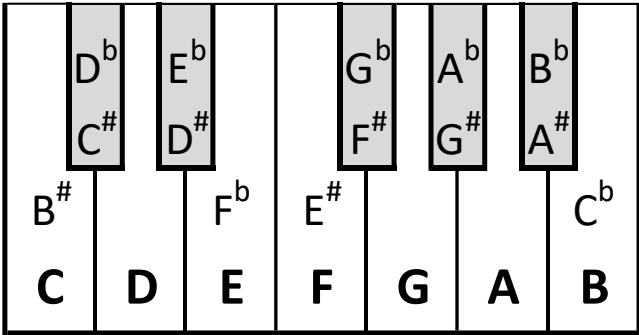
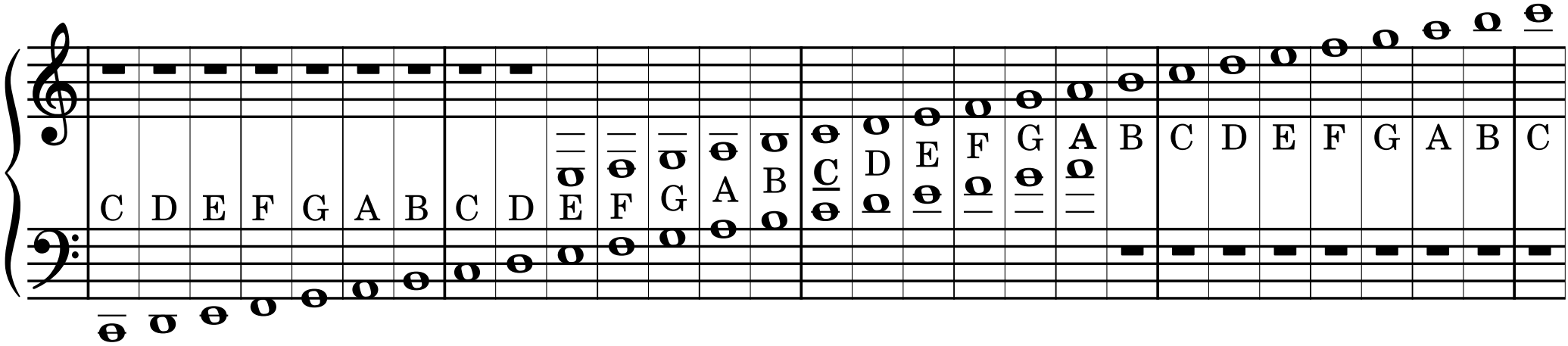
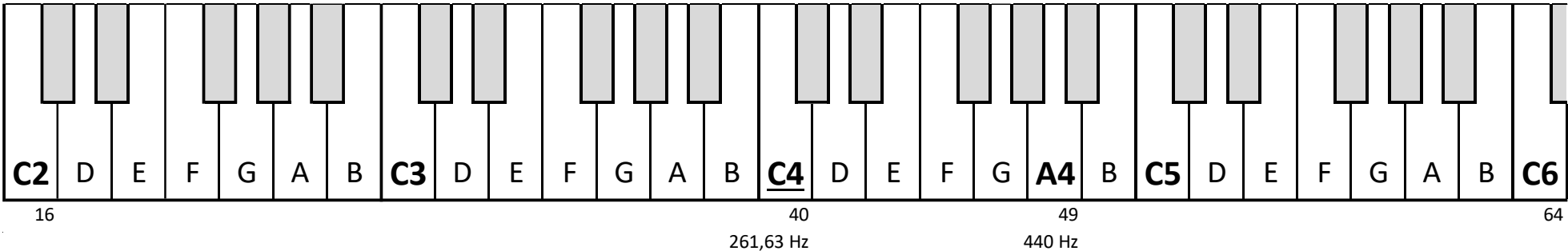
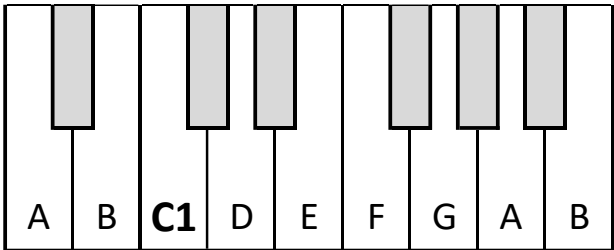


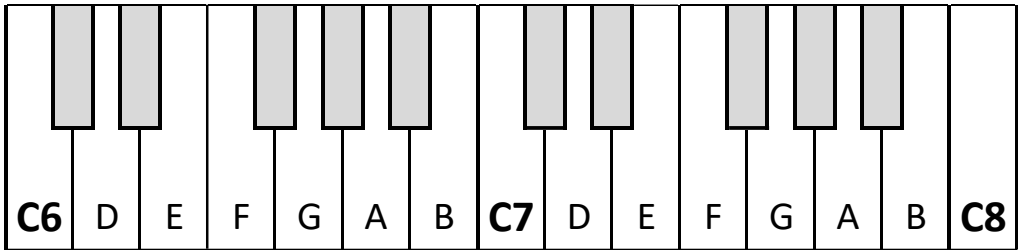
# Klaviatur



# Klaviatur



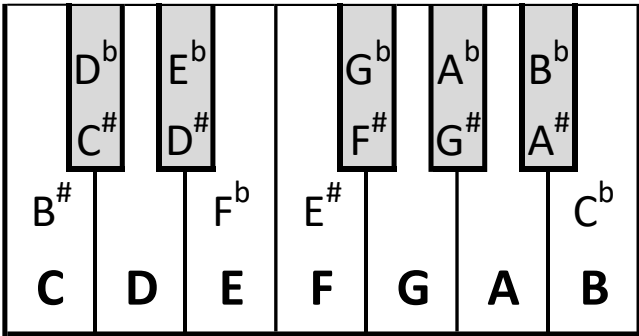
1



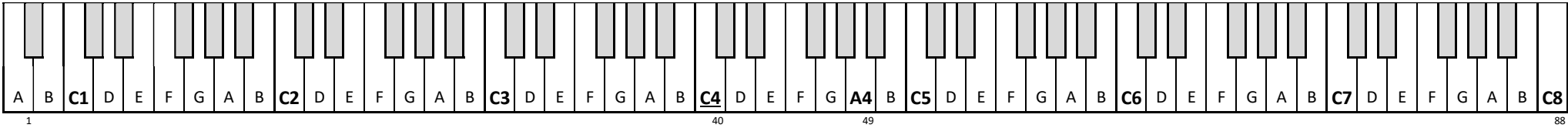
88

A B C D E F G A B

D E F G A B C D E F G A B C

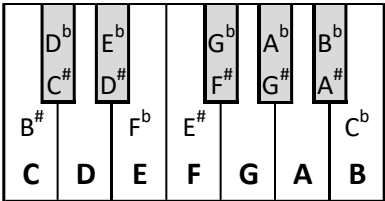


# Klaviatur



261,63 Hz      440 Hz

Musical notation for the piano keyboard. The treble clef (top) and bass clef (bottom) are shown. The notes are labeled with their respective letter names and accidentals. The treble clef notes are: A, B, C, D, E, F, G, A, B, C, D, E, F, G, A, B, C, D, E, F, G, A, B, C, D, E, F, G, A, B, C, D, E, F, G, A, B, C. The bass clef notes are: C, D, E, F, G, A, B, C, D, E, F, G, A, B, C, D, E, F, G, A, B, C, D, E, F, G, A, B, C. The notes are arranged in a grid format, with the treble clef notes above the bass clef notes.



# Tonefrekvenser

Oktav 0	Oktav 1	Oktav 2	Oktav 3	Oktav 4	Oktav 5	Oktav 6	Oktav 7	Oktav 8
	4 C 32,703	16 C 65,406	28 C 130,81	<b>40 C 261,63</b>	52 C 523,25	64 C 1.046,5	76 C 2.093,0	88 C 4.186,0
	5 C <sup>#</sup> , D <sup>b</sup> 34,648	17 C <sup>#</sup> , D <sup>b</sup> 69,296	29 C <sup>#</sup> , D <sup>b</sup> 138,59	41 C <sup>#</sup> , D <sup>b</sup> 277,18	53 C <sup>#</sup> , D <sup>b</sup> 554,37	65 C <sup>#</sup> , D <sup>b</sup> 1.108,7	77 C <sup>#</sup> , D <sup>b</sup> 2.217,5	
	6 D 36,708	18 D 73,416	30 D 146,83	42 D 293,66	54 D 587,33	66 D 1.174,7	78 D 2.349,3	
	7 D <sup>#</sup> , E <sup>b</sup> 38,891	19 D <sup>#</sup> , E <sup>b</sup> 77,782	31 D <sup>#</sup> , E <sup>b</sup> 155,56	43 D <sup>#</sup> , E <sup>b</sup> 311,13	55 D <sup>#</sup> , E <sup>b</sup> 622,25	67 D <sup>#</sup> , E <sup>b</sup> 1.244,5	79 D <sup>#</sup> , E <sup>b</sup> 2.489,0	
	8 E 41,203	20 E 82,407	32 E 164,81	44 E 329,63	56 E 659,26	68 E 1.318,5	80 E 2.637,0	
	9 F 43,654	21 F 87,307	33 F 174,61	45 F 349,23	57 F 698,46	69 F 1.396,9	81 F 2.793,8	
	10 F <sup>#</sup> , G <sup>b</sup> 46,249	22 F <sup>#</sup> , G <sup>b</sup> 92,499	34 F <sup>#</sup> , G <sup>b</sup> 185,00	46 F <sup>#</sup> , G <sup>b</sup> 369,99	58 F <sup>#</sup> , G <sup>b</sup> 739,99	70 F <sup>#</sup> , G <sup>b</sup> 1.480,0	82 F <sup>#</sup> , G <sup>b</sup> 2.960,0	
	11 G 48,999	23 G 97,999	35 G 196,00	47 G 392,00	59 G 783,99	71 G 1.568,0	83 G 3.136,0	
	12 G <sup>#</sup> , A <sup>b</sup> 51,913	24 G <sup>#</sup> , A <sup>b</sup> 103,83	36 G <sup>#</sup> , A <sup>b</sup> 207,65	48 G <sup>#</sup> , A <sup>b</sup> 415,30	60 G <sup>#</sup> , A <sup>b</sup> 830,61	72 G <sup>#</sup> , A <sup>b</sup> 1.661,2	84 G <sup>#</sup> , A <sup>b</sup> 3.322,4	
1 A 27,5	13 A 55	25 A 110	37 A 220	<b>49 A 440</b>	61 A 880	73 A 1.760	85 A 3.520	
2 A <sup>#</sup> , B <sup>b</sup> 29,135	14 A <sup>#</sup> , B <sup>b</sup> 58,270	26 A <sup>#</sup> , B <sup>b</sup> 116,54	38 A <sup>#</sup> , B <sup>b</sup> 233,08	50 A <sup>#</sup> , B <sup>b</sup> 466,16	62 A <sup>#</sup> , B <sup>b</sup> 932,33	74 A <sup>#</sup> , B <sup>b</sup> 1.864,7	86 A <sup>#</sup> , B <sup>b</sup> 3.729,3	
3 B 30,868	15 B 61,735	27 B 123,47	39 B 246,94	51 B 493,88	63 B 987,77	75 B 1.975,5	87 B 3.951,1	

$$f(n) = 440 \cdot \sqrt[12]{2^{n-49}} \text{ Hz}$$

